



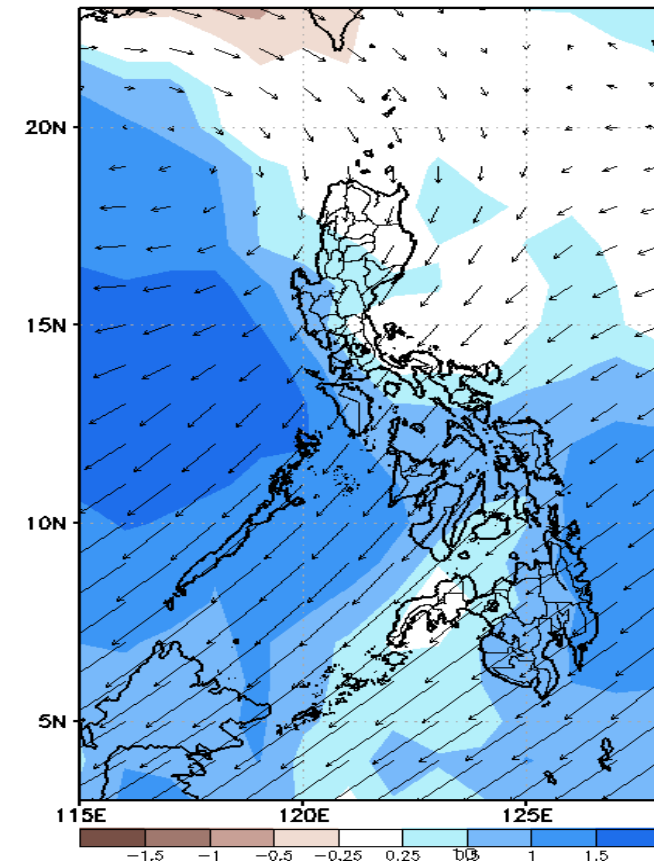
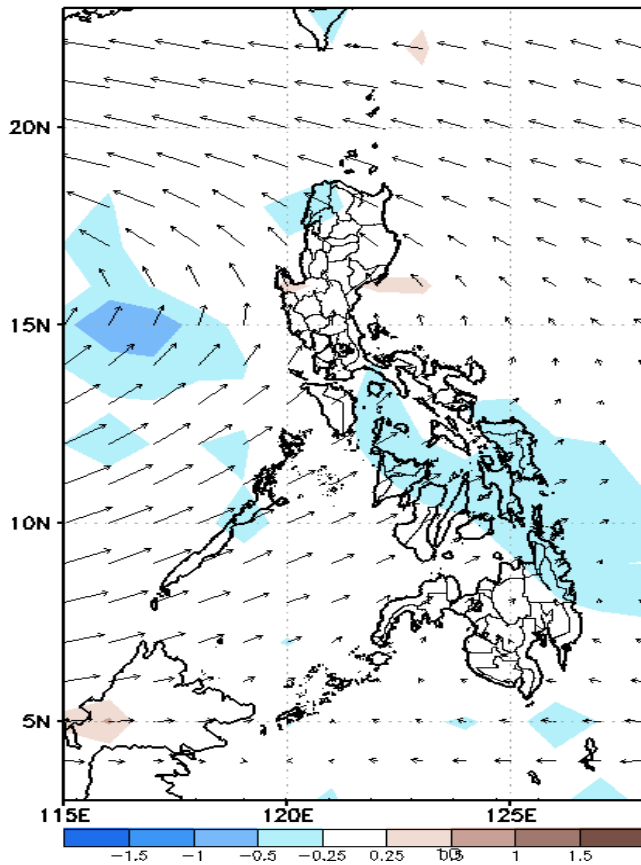
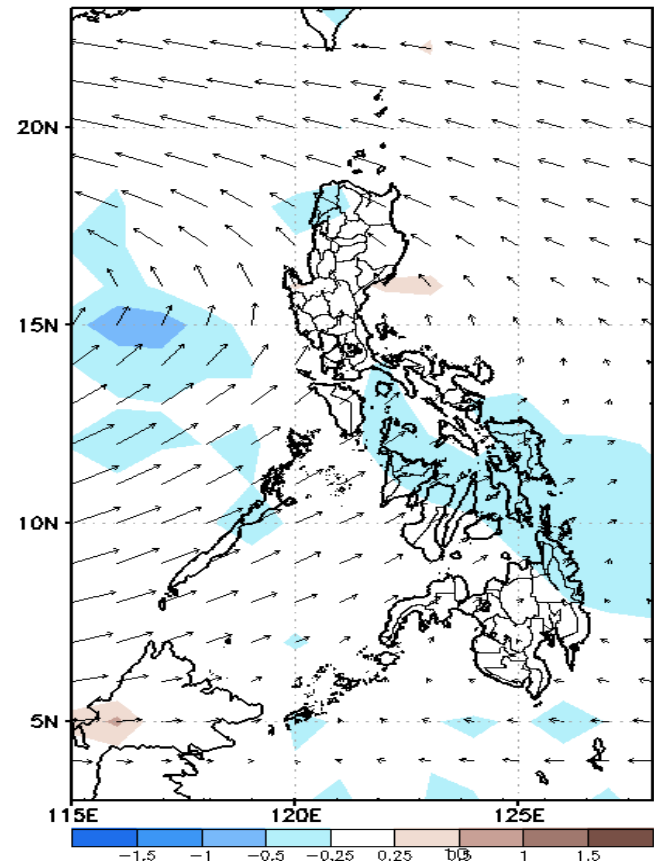
Week 1 & Week 2 Forecast for the Philippines using GEFS Model



GEFS Week-1 Forecasts: Wind Anomaly Forecast

Week 1: Sep 26- Oct 02, 2022

GEFS Week-1 850-hPa Divergence and Wind Anom. Valid: 20220926 - 20221002 GEFS Week-1 700-hPa Divergence and Wind Anom. Valid: 20220926 - 20221002 GEFS Week-1 200-hPa Divergence and Wind Anom. Valid: 20220926 - 20221002

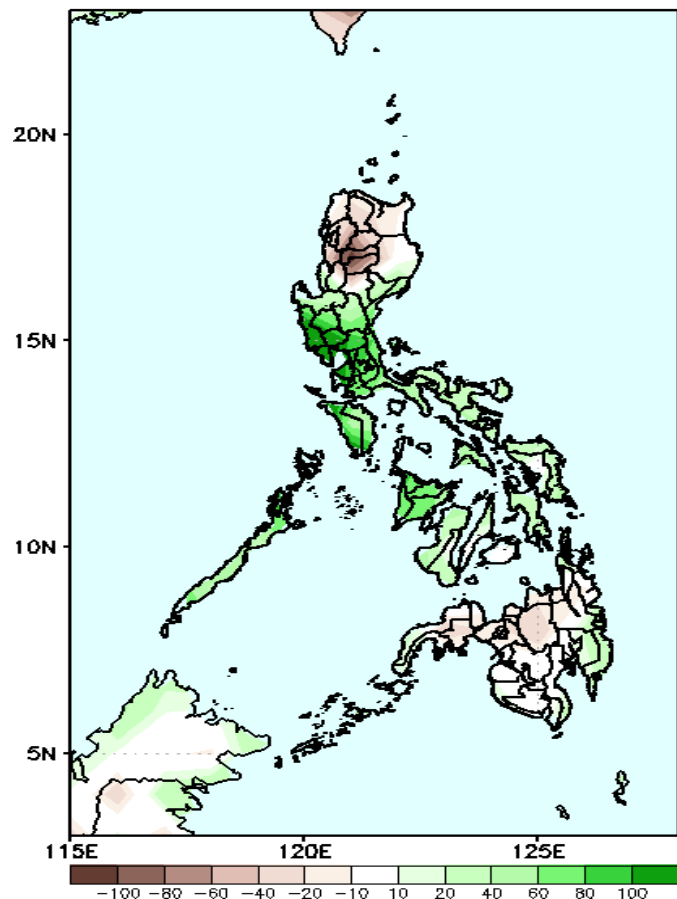


Easterlies affecting Extreme Northern Central Luzon. Southwest Monsoon affecting most parts of the country during the forecast period.

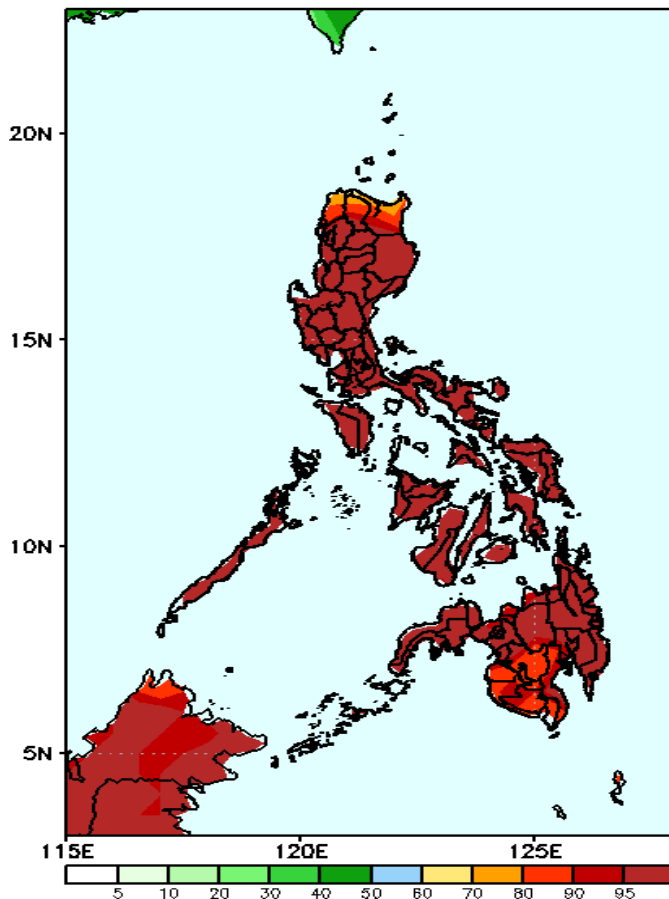
Precipitation Anomaly and Exceedance Probability > 25/50 mm

Week 1: Sep 26- Oct 02, 2022

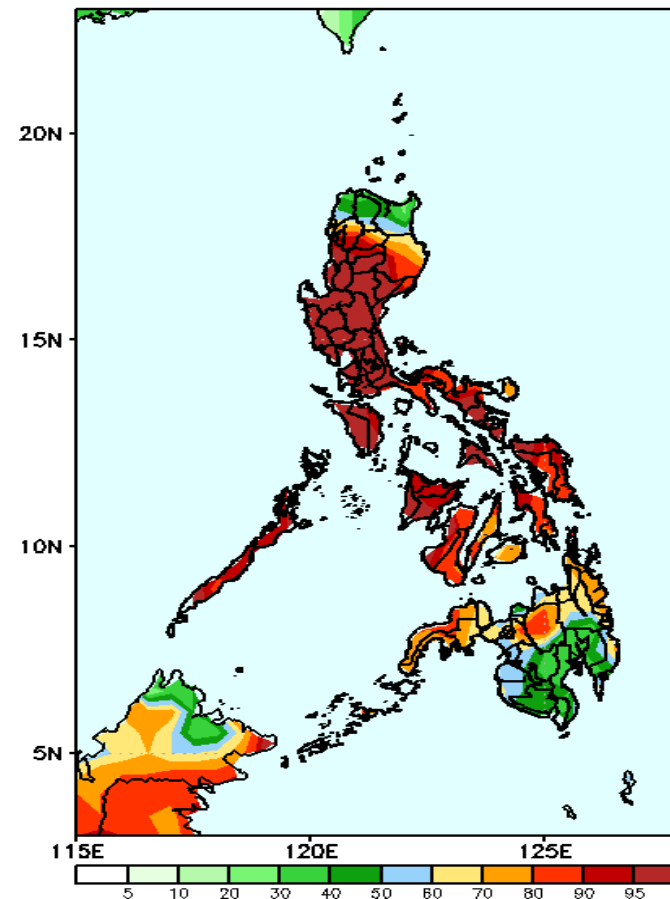
GEFS Week-1 Precip Anomaly
Valid: 20220926 - 20221002



GEFS Week-1 Exceedance Prob. > 25mm
Valid: 20220926 - 20221002



GEFS Week-1 Exceedance Prob. > 50mm
Valid: 20220926 - 20221002



Increase of rainfall of 40-100mm is expected in Central & Southern Luzon, Bicol Region, Visayas and Davao Region while rainfall deficit of 40-80mm is more likely in Ilocos and Cordillera Region and most of Mindanao during the forecast period.

High probability of rainfall to exceed 25mm in most parts of the country during the forecast period.

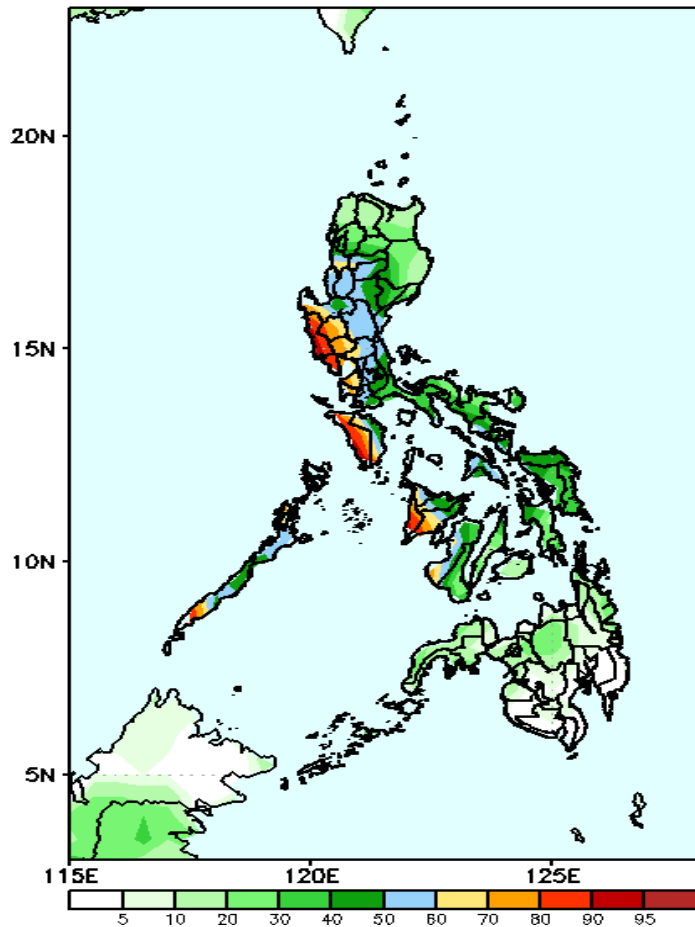
High probability of rainfall to exceed 50mm in most parts of the country except Ilocos Norte, Apayao, Cagayan and most parts of SOCCSKARGEN and Davao Region during the forecast period.



Exceedance Probability > 100/150/200 mm

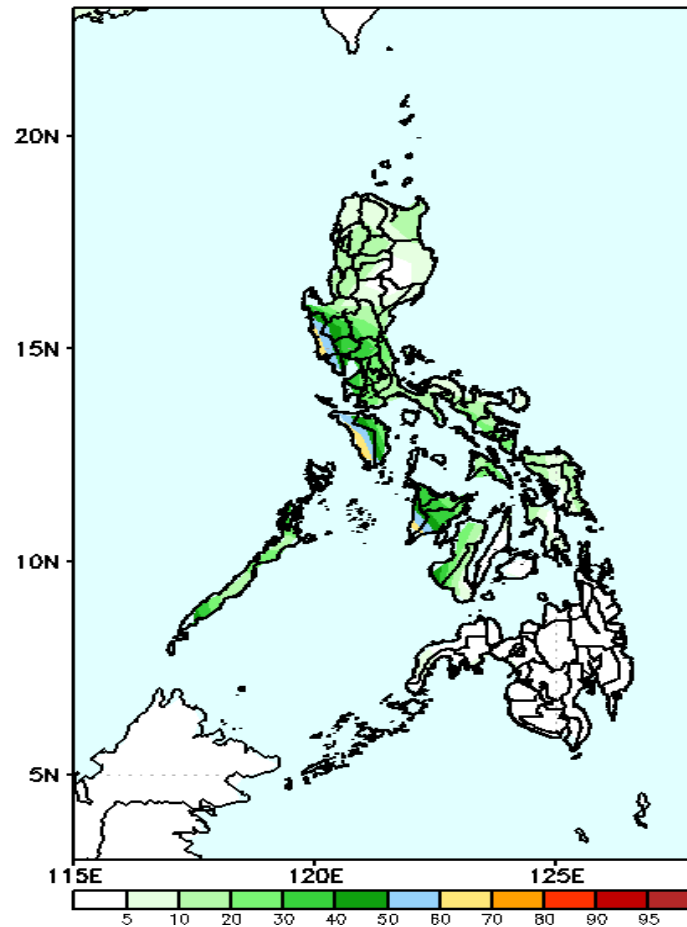
Week 1: Sep 26- Oct 02, 2022

GEFS Week-1 Exceedance Prob. > 100mm
Valid: 20220926 - 20221002



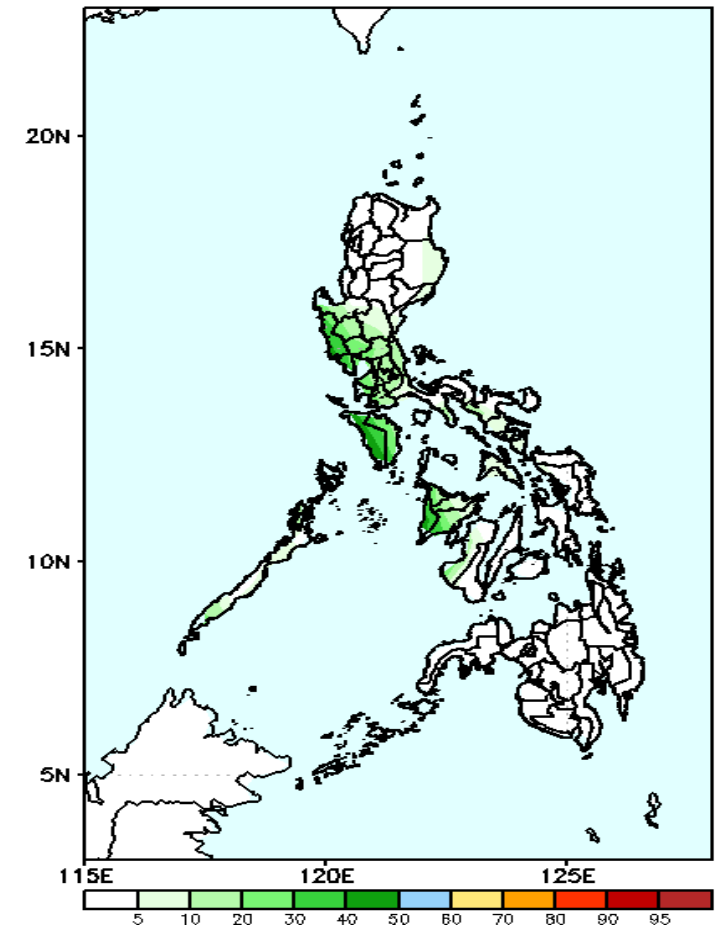
High probability of rainfall to exceed 100mm in most parts of Western Luzon and some areas in Western Visayas while less likely for the rest of the country during the forecast period.

GEFS Week-1 Exceedance Prob. > 150mm
Valid: 20220926 - 20221002



Low probability of rainfall to exceed 150mm in most parts of the country during the forecast period.

GEFS Week-1 Exceedance Prob. > 200mm
Valid: 20220926 - 20221002



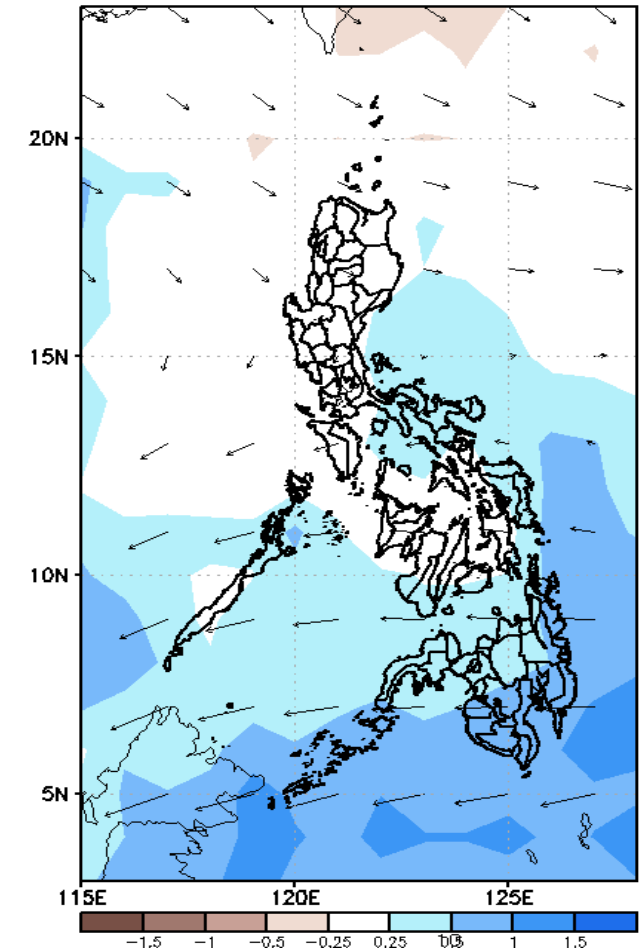
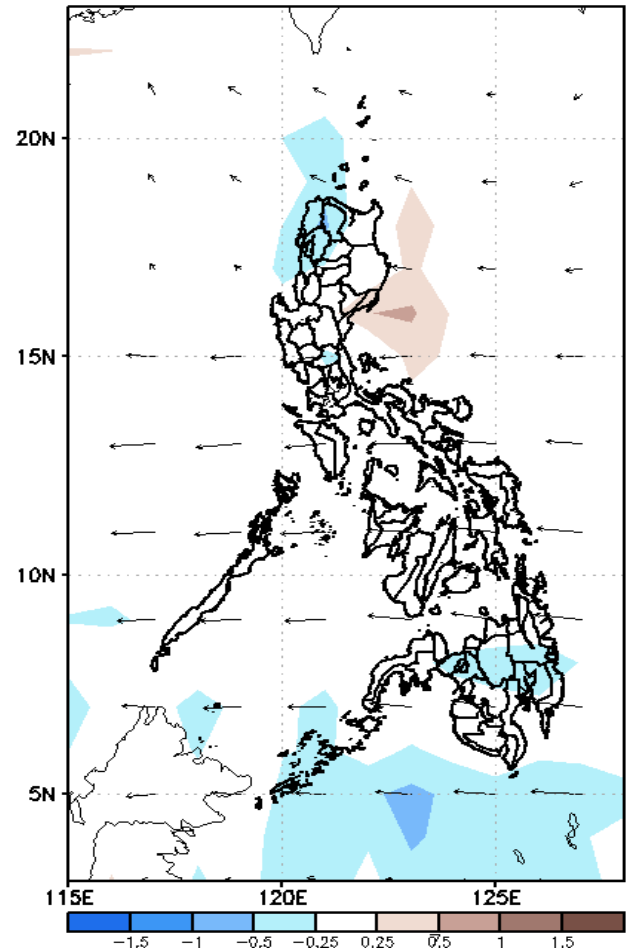
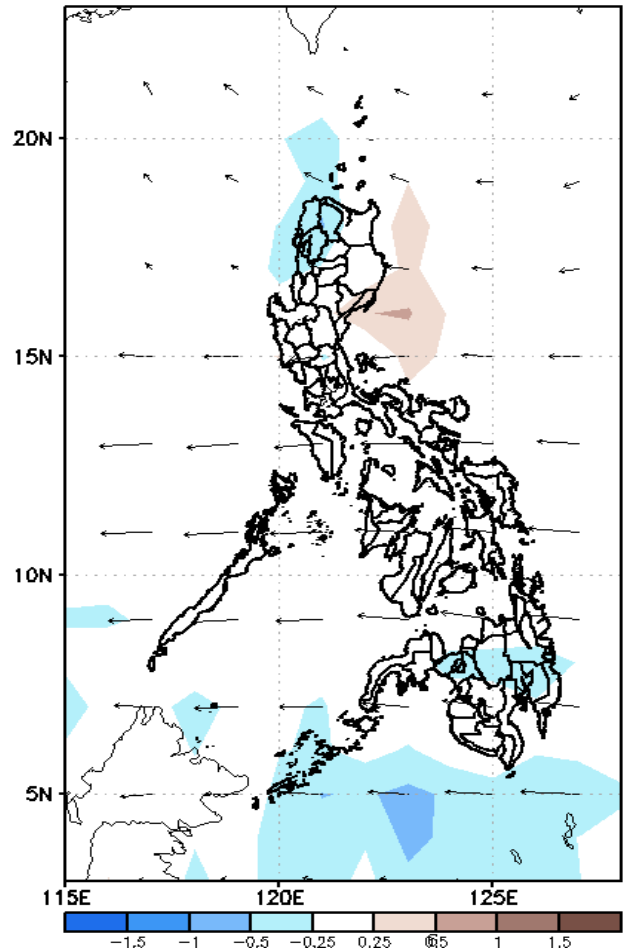
Low probability of rainfall to exceed 200mm in most parts of the country during the forecast period.



GEFS Week-2 Forecasts: Wind Anomaly Forecast

Week 2: Oct 03-09, 2022

GEFS Week-2 850-hPa Divergence and Wind Anom
Valid: 20221003 - 20221009
GEFS Week-2 700-hPa Divergence and Wind Anom
Valid: 20221003 - 20221009
GEFS week-2 200-hPa Divergence and Wind Anom
Valid: 20221003 - 20221009

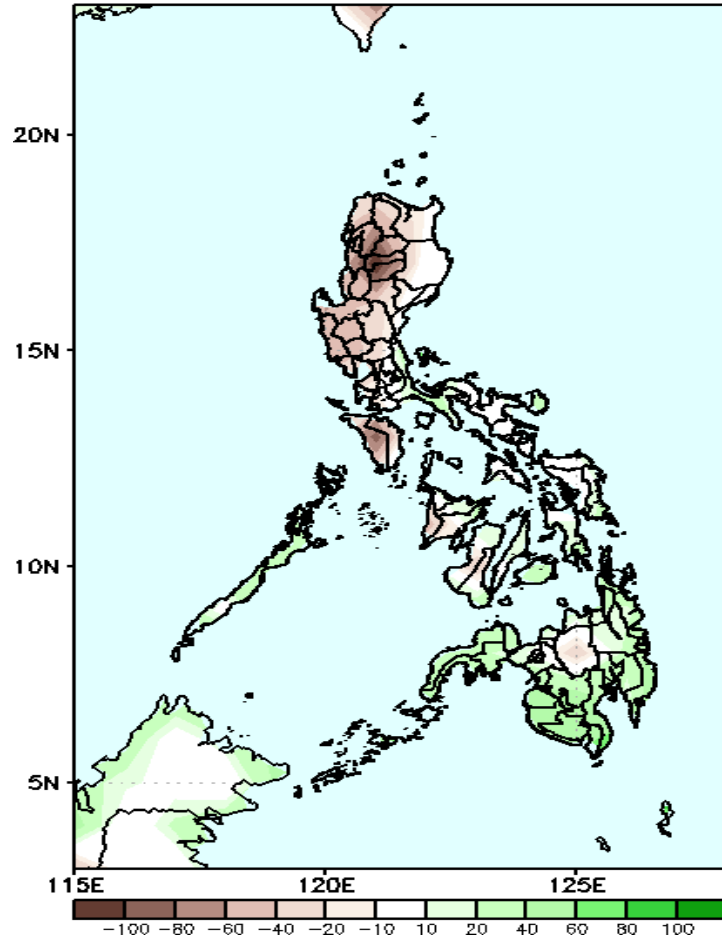


Easterlies affecting most parts of the country during the forecast period.

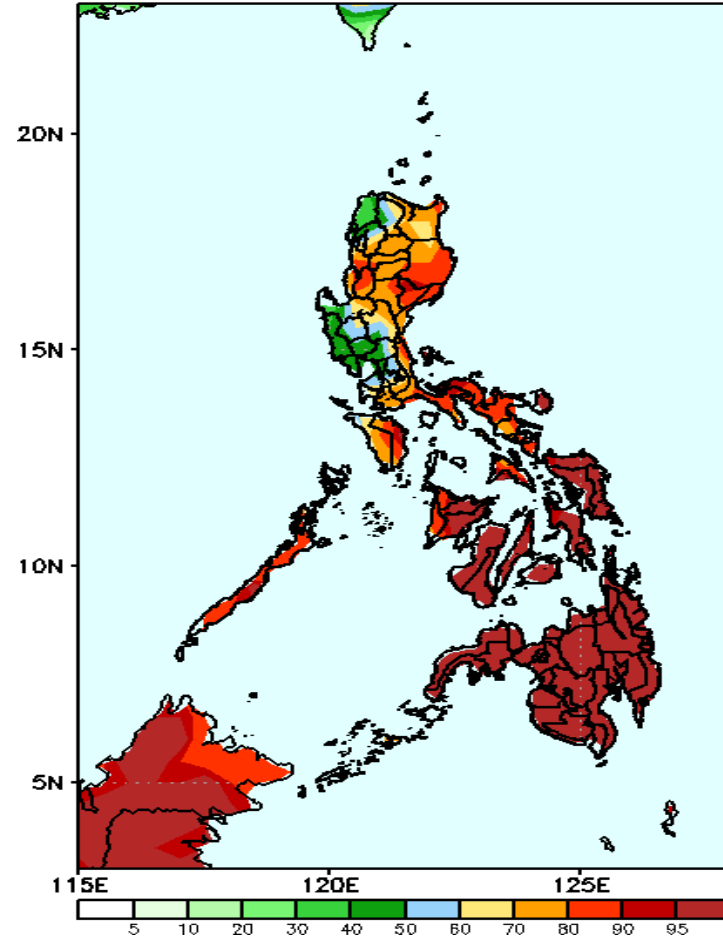
Precipitation Anomaly and Exceedance Probability > 25/50 mm

Week 2: Oct 03-09, 2022

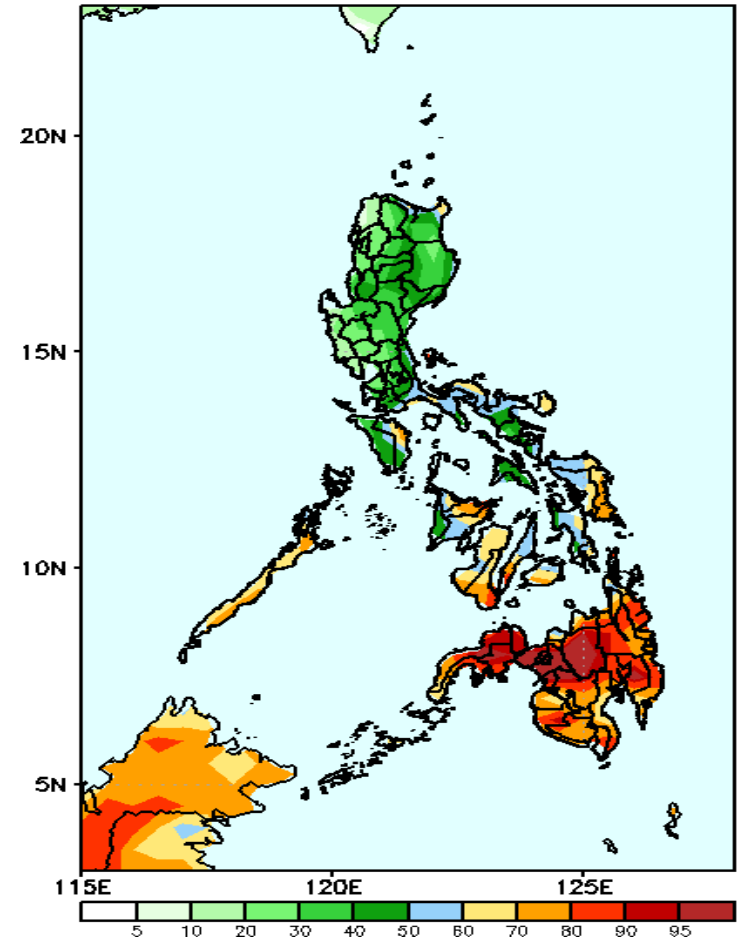
GEFS Week-2 Precip Anomaly
Valid: 20221003 - 20221009



GEFS Week-2 Exceedance Prob. > 25mm
Valid: 20221003 - 20221009



GEFS Week-2 Exceedance Prob. > 50mm
Valid: 20221003 - 20221009



Rainfall deficit of 40-100mm is expected in most parts of Luzon and Antique while 40-80mm increase of rainfall is more likely in Palawan, Bohol and most of Mindanao during the forecast period.

High probability of rainfall to exceed 25mm in most parts of the country except Ilocos Norte and some areas in Central Luzon during the forecast period.

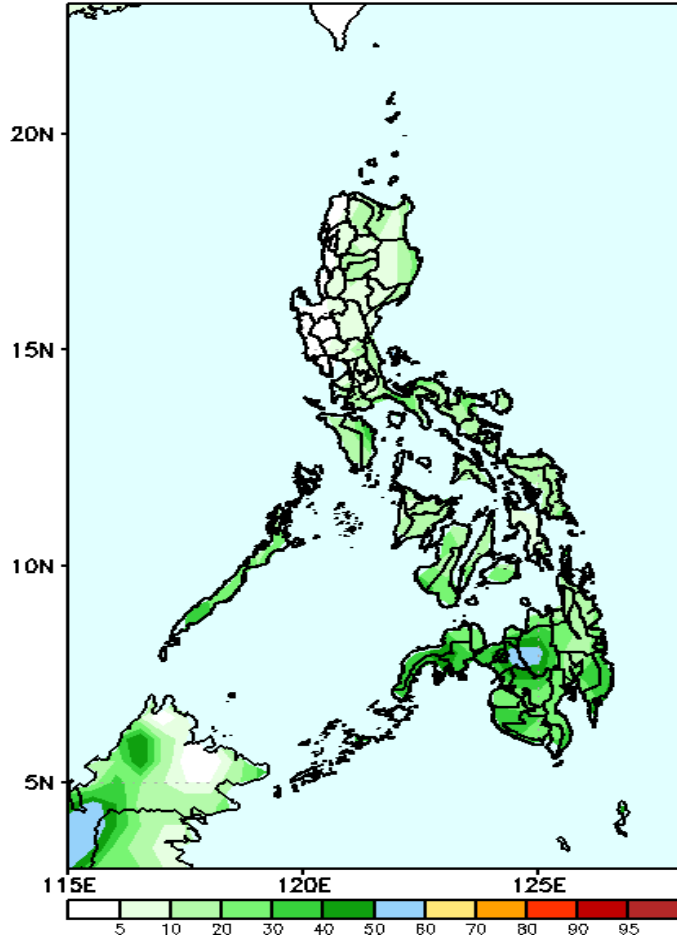
High probability of rainfall to exceed 50mm in most parts of Visayas and Mindanao while less probability in Luzon during the forecast period.



Exceedance Probability > 100/150/200 mm

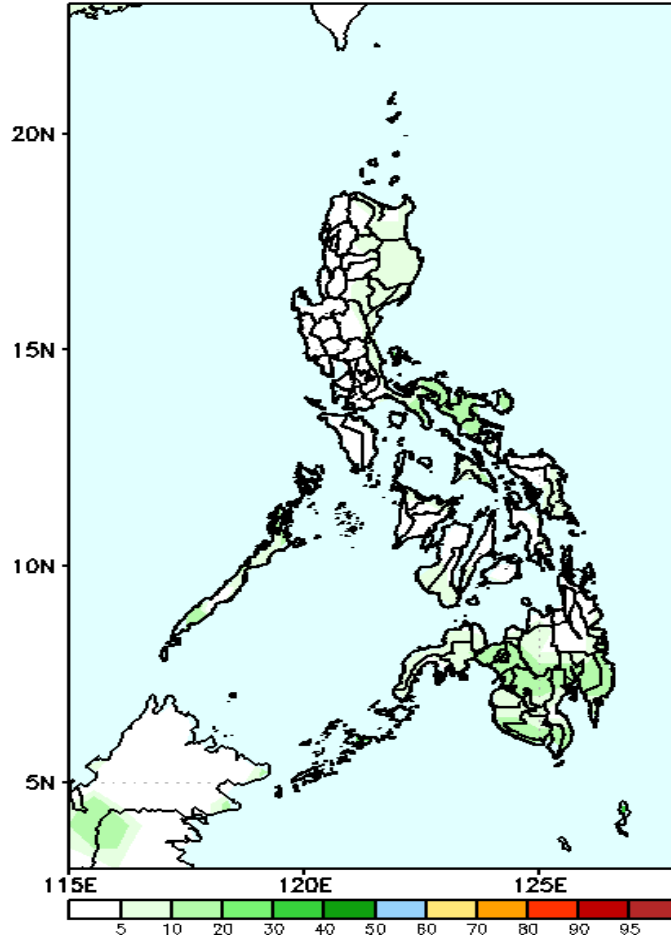
Week 2: Oct 03-09, 2022

GEFS Week-2 Exceedance Prob. > 100mm
Valid: 20221003 - 20221009



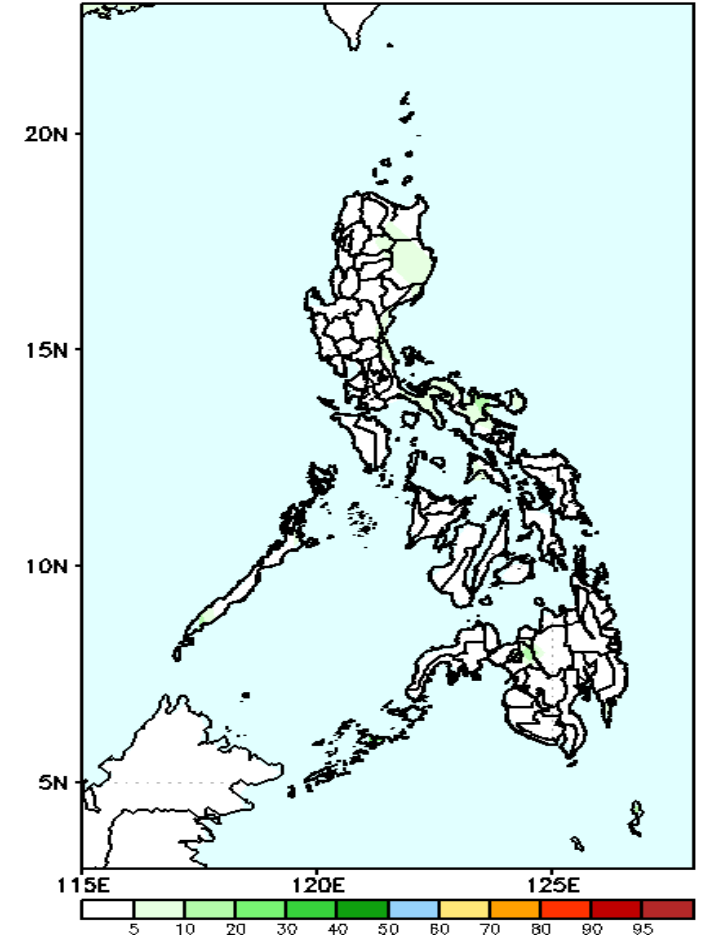
Low probability of rainfall to exceed 100mm in most parts of the country during the forecast period.

GEFS Week-2 Exceedance Prob. > 150mm
Valid: 20221003 - 20221009



Low probability of rainfall to exceed 150mm in most parts of the country during the forecast period.

GEFS Week-2 Exceedance Prob. > 200mm
Valid: 20221003 - 20221009

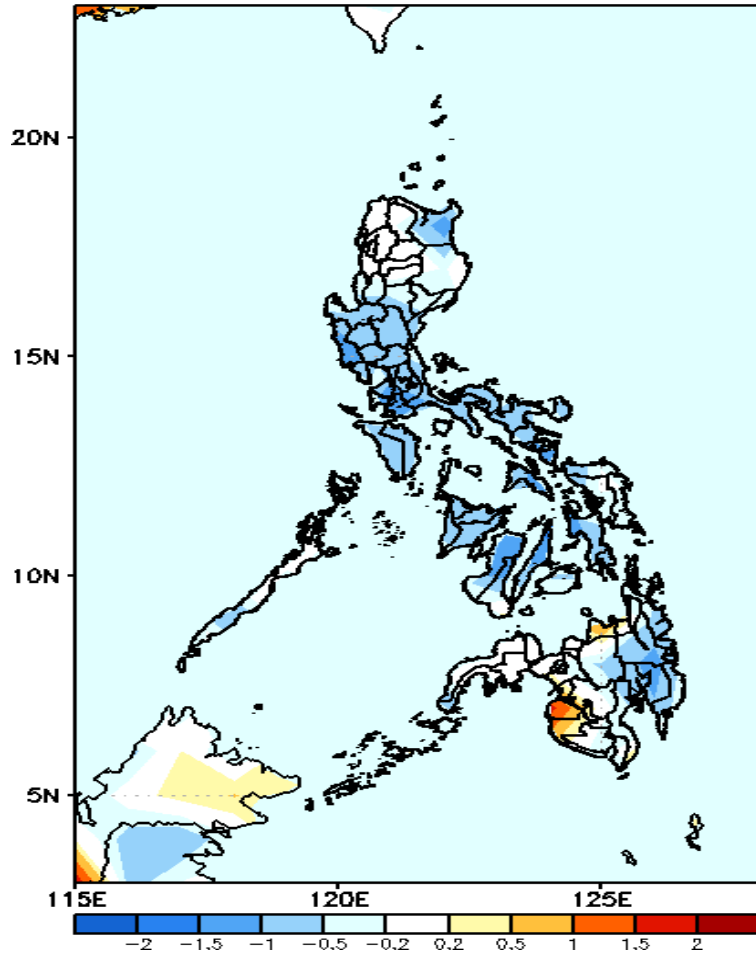


Low probability of rainfall to exceed 200mm in most parts of the country during the forecast period.



GEFS Week-1 & 2 Forecasts: T2m Anomaly

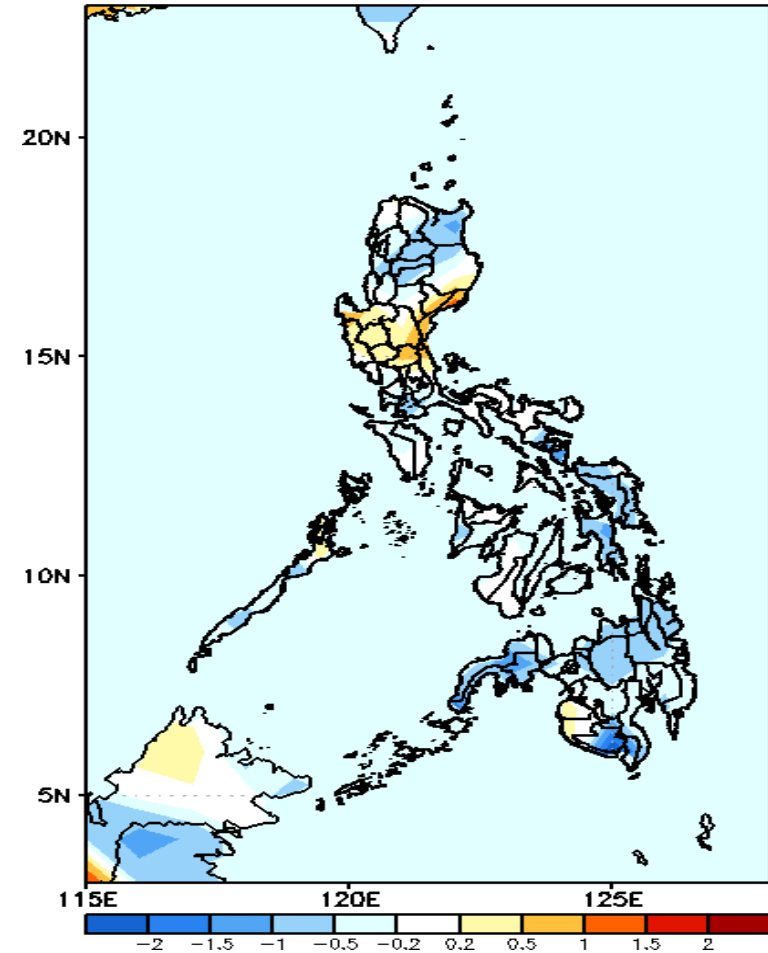
GEFS Week-1 T2m Anomaly
Valid: 20220926 - 20221002



2m Temperature Week 1: Sep 26- Oct 02, 2022

Near to cooler than average surface air temperature will likely experience in most parts of the country except in Misamis Oriental, Sultan Kudarat & Maguindanao where warmer than average is expected during the forecast period.

GEFS Week-2 T2m Anomaly
Valid: 20221003 - 20221009



2m Temperature Week 2: Oct 03-09, 2022

Near to cooler than average surface air temperature will likely experience in most parts of the country except in Central Luzon where slightly warmer to warmer than average temperature is expected during the forecast period.

